

Silent Drawer System

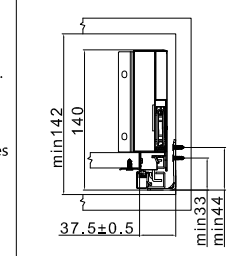
Modul Box Assembly Instruction

Special Features:

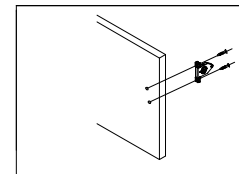
- Length:270,300,350,400,450,500,550mm.
- The drawer side-board is 120mm high.
- Drawer width can be designed freely with automatic error adjustment.
- Hidden full pullout silencing sliding skid can bear 35kg and enjoys
- excellent stability and quite and smooth sliding performance.
- Quick installation and dismantle.
- Newly-designed built-in damper is free from reinstallation and ensures soft and smooth drawer movements.

Basic length	Internally usable drawer depth	Minimum installation depth of drawer	Minimum installation height
270mm	244mm	270mm	142mm
300mm	274mm	300mm	142mm
350mm	324mm	350mm	142mm
400mm	374mm	400mm	142mm
450mm	424mm	450mm	142mm
500mm	474mm	500mm	142mm
550mm	524mm	550mm	142mm

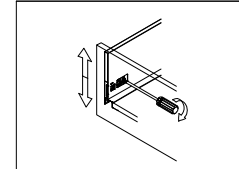
Inside Cabinet Dimension



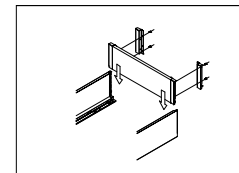
Front fixing brackets mounting



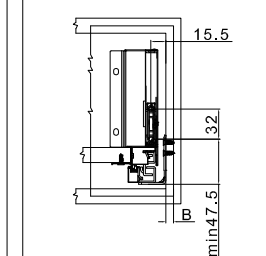
Front panel height adjustment : ±2mm



Mounting the drawer

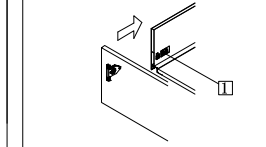


Front Panel Mounting Positions

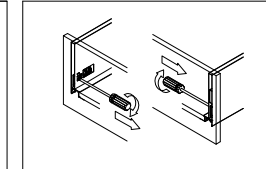


B Side overlay(user-defined)

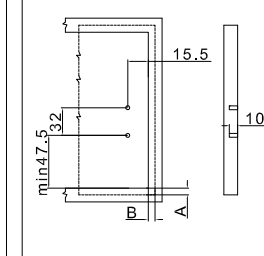
① Tighten the fixing screw after installed the panel



Front panel side adjustment : right1mm

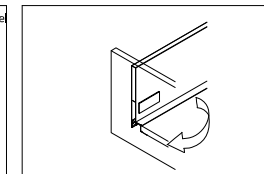


Front Fixing Brackets Positions

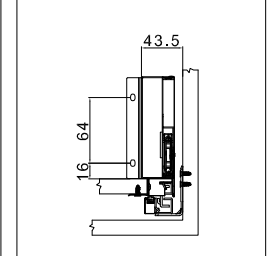


A,B Side overlay(user-defined)

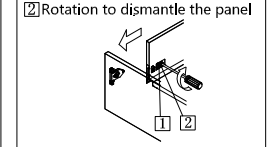
Front panel removing



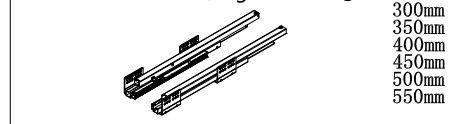
Back Panel Mounting Positions



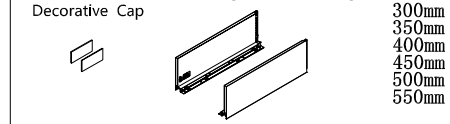
① Loosen the fastening screws
② Rotation to dismantle the panel



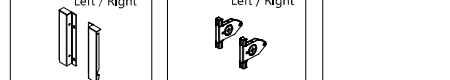
1. Guide Left/Right Length : 270mm 300mm 350mm 400mm 450mm 500mm 550mm



2.Drawer Side & Decorative Cap Left/Right Length: 270mm 300mm 350mm 400mm 450mm 500mm 550mm



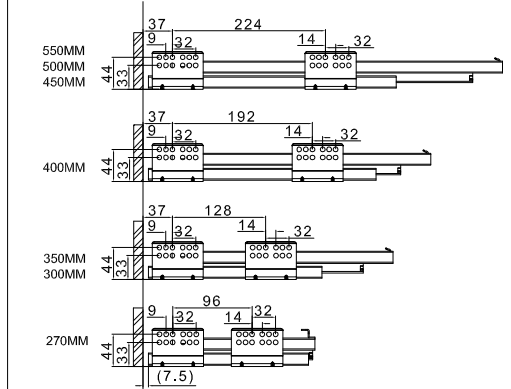
3.Back connector Left / Right



4.Front connector Left / Right

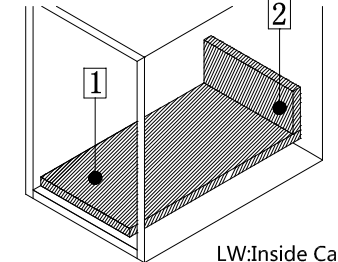


Runner Installation(mm)



Basic length:270/300/350/400/450/500/550

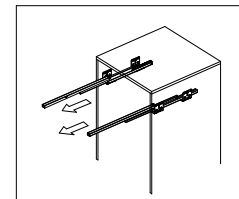
Technology pivot: Bottom and Back Panel Measurement 16MM Density Panel



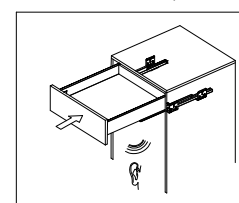
LW:Inside Cabinet Width

- ① Bottom panel width=Inside Cabinet Width-75±0.5
Bottom panel length=Runner length-10MM
- ② Back panel height= 100MM
Back panel width=Inside Cabinet Width-87±0.5

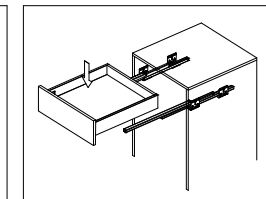
Installing the drawer



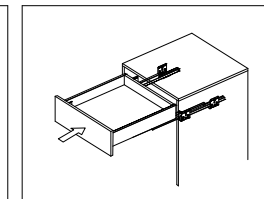
Function of the damper



Removing the drawer



Push the metal spring part from the panel & pull out



Push the metal spring part from the panel & pull out

