

KINVARO

F-20 folding flap fitting



- Holds flap securely in any position
- Extremely smooth movement
- Adjustable spring force
- Integrated adjustable closing damper
- Flap with 3-dimensional adjustment – height, side, angle: direct adjustment ± 1.5 mm
- Reveal with 3-dimensional adjustment – height, side, angle: Direct adjustment
- Opening limiter adjustable to 90°
- Wide range of applications for many different flap materials
- Fast, tool-free clip fitting of the front
- Pre-assembled Euro screws and positioning pins for easy mounting of the fitting on the side wall
- High stability
- Weight 3.8 to 19.2 kg
- Range of flaps:
Width: 400-1,200 mm
Height: 520-900 mm
- Cover caps in white and grey, similar to RAL 7045

AREA OF APPLICATION

Cabinet height (KH)	Steering arm type	Flap weight incl. handle (kg)		
		Lift mechanism B	Lift mechanism C	Lift mechanism D
520-559	Type 2	4.6-13.8	-	-
560-599	Type 3	4.4-12.6	7.0-14.7	-
600-649	Type 4	4.1-12.1	6.8-15.8	-
650-699	Type 5	3.8-11.4	6.7-16.9	-
700-749	Type 6	-	6.5-16.4	10.0-18.0
750-799	Type 7	-	6.0-15.6	8.6-19.2
800-849	Type 7	-	-	7.8-18.0
850-900	Type 7	-	-	6.5-16.5

ORDER INFORMATION

Kinvaro F-20 folding flap fitting with white cover cap
Set: Folding flap fitting, screw-on bracket for wood, cover caps, link hinges



KH	B	C	D
520 - 559 mm	F152147837		
600 - 649 mm		F152147842	
700 - 749 mm		F152147844	
750 - 900 mm		F152147787	F152147847

Kinvaro F-20 folding flap fitting with grey cover cap
Set: Folding flap fitting, screw-on bracket for wood, cover caps, link hinges

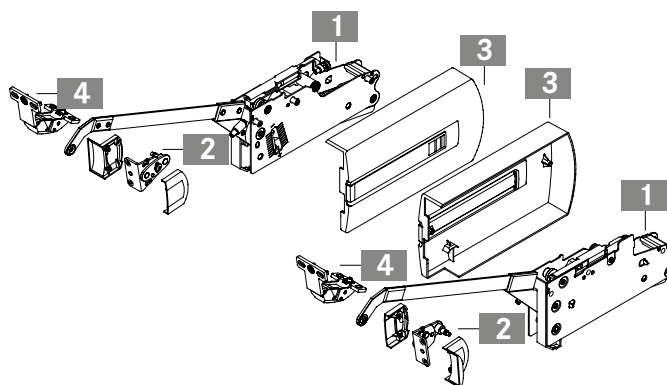


KH	B	C	D
520 - 559 mm	F152145237		
560 - 599 mm	F152145238	F152145239	
600 - 649 mm	F152145240	F152145241	
650 - 699 mm	F152145242	F152145243	
700 - 749 mm		F152145244	F152145245
750 - 900 mm		F152145246	F152145247

Kinvaro F-20 set consisting of:

- 1 Fitting right and left (1x)
 - 2 Screw-on bracket for wood connection incl. cover caps (2x)
 - 3 Cover caps right and left (1x)
 - 4 Link hinges (2x)
- Paper template (1x), assembly instructions (1x)

Note: Please order Tiomos 120° hinges with spring, without damping as well as Tiomos mounting plates for top panel separately.

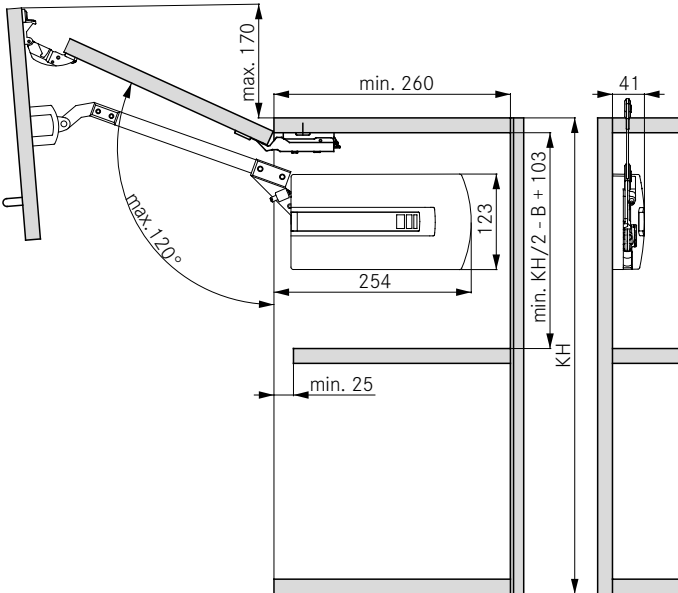
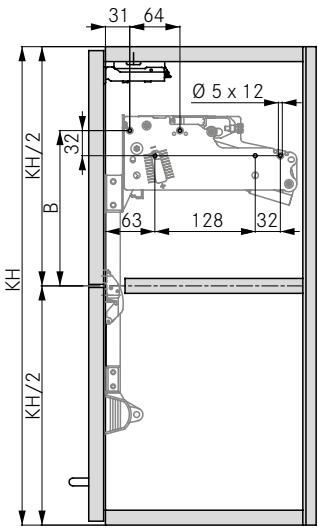


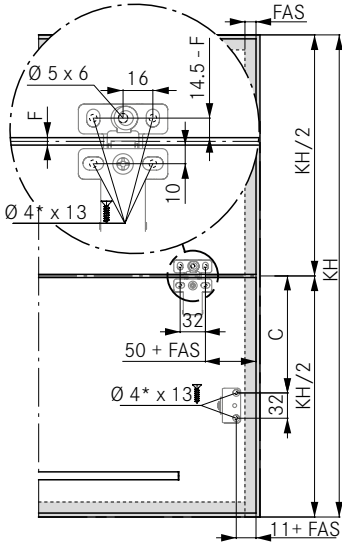
PAGE REFERENCES

Kinvaro F-20 adjustment options	78				
Assembly aids	88				

PLANNING INFORMATION

All dimensions in millimetres

Required space	Side wall drilling positions	Side wall Drilling clearance		
		KH	Type	B
		520 - 529	2	173
		530 - 539	2	158
		540 - 549	2	143
		550 - 559	2	128
		560 - 569	3	183
		570 - 579	3	168
		580 - 589	3	153
		590 - 599	3	138
		600 - 609	4	208
		610 - 619	4	198
		620 - 629	4	178
		630 - 639	4	168
		640 - 649	4	158
		650 - 699	5	225
		700 - 749	6	235
750 - 799	7	250		

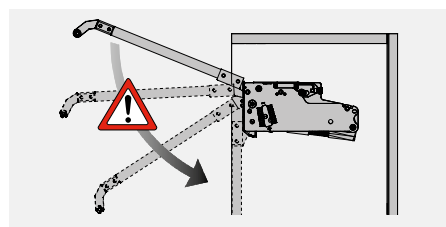
Front installation for wooden and frame flaps (min. 45 mm width)	Front Drilling clearance		
	KH	Type	C
	520 - 529	2	133
	530 - 539	2	148
	540 - 549	2	163
	550 - 559	2	178
	560 - 569	3	145
	570 - 579	3	160
	580 - 589	3	175
	590 - 599	3	190
	600 - 609	4	138
	610 - 619	4	148
	620 - 629	4	168
	630 - 639	4	178
	640 - 649	4	188
	650 - 699	5	146
	700 - 749	6	156
750 - 799	7	166	

* Pre-drilling required Ø 2 mm

Number of hinges on top panel
From 900 mm cabinet width: 3 hinges. Hinges with spring require an opening angle of min. 120°

Calculation of flap weight
 Flap width x flap height x flap thickness x density ¹ + weight of handle ² = weight of flap
¹ Densities: MDF board 0.85 kg/dm³, chipboard 0.65 kg/dm³, spruce/pine 0.45 kg/dm³
² For bar handles, allow 0.1 kg per 100 mm of the handle length. We recommend a trial fitting

WARNING



Caution!
Caution risk of injury!
Fitting is under spring tension!

LEGEND

B	Drilling dimension - side wall
C	Drilling dimension - front
F	Reveal
FAS	Front overlay, side
KH	Cabinet height

KINVARO

F-20 folding flap fitting

Required space	Side wall drilling positions	Side wall Drilling clearance																	
		<table border="1"> <thead> <tr> <th>KH</th> <th>Type</th> <th>B</th> </tr> </thead> <tbody> <tr> <td>800 - 849</td> <td>7</td> <td>103</td> </tr> <tr> <td>850 - 900</td> <td>7</td> <td>110</td> </tr> </tbody> </table> <table border="1"> <thead> <tr> <th colspan="2">Shelf distance</th> </tr> <tr> <th>KH</th> <th>D</th> </tr> </thead> <tbody> <tr> <td>800 - 849</td> <td>≤293</td> </tr> <tr> <td>850 - 900</td> <td>≤312</td> </tr> </tbody> </table>	KH	Type	B	800 - 849	7	103	850 - 900	7	110	Shelf distance		KH	D	800 - 849	≤293	850 - 900	≤312
KH	Type	B																	
800 - 849	7	103																	
850 - 900	7	110																	
Shelf distance																			
KH	D																		
800 - 849	≤293																		
850 - 900	≤312																		
<p>Front installation for wooden and frame flaps (min. 45 mm width)</p>	<p>Front Drilling clearance</p>																		
	<table border="1"> <thead> <tr> <th>KH</th> <th>Type</th> <th>C</th> </tr> </thead> <tbody> <tr> <td>800 - 900</td> <td>7</td> <td>304</td> </tr> </tbody> </table> <p>* Pre-drilling required Ø 2 mm</p>	KH	Type	C	800 - 900	7	304												
KH	Type	C																	
800 - 900	7	304																	
	<p>Number of hinges on top panel From 900 mm cabinet width: 3 hinges. Hinges with spring require an opening angle of min. 120°</p>																		
<p>Calculation of flap weight Flap width x flap height x flap thickness x density ¹ + weight of handle ² = weight of flap ¹ Densities: MDF board 0.85 kg/dm³, chipboard 0.65 kg/dm³, spruce/pine 0.45 kg/dm³ ² For bar handles, allow 0.1 kg per 100 mm of the handle length. We recommend a trial fitting</p>																			

PAGE REFERENCES

Kinvaro F-20 adjustment options	78				
Assembly aids	88				